

Revised: August 2010

LOS ANGELES UNIFIED SCHOOL DISTRICT  
CONSERVATORY OF FINE ARTS

# Gifted/Talented Programs' Conservatory of Fine Arts

Distribution: Administrators, Parents, Teachers and Coordinators, Gifted/Talented Programs



The Saturday Conservatory offers a unique venue that will effectively provide the serious student with a broad exposure to the arts, the discipline required, and the opportunity to develop excellence through development, theory, and performance skills. We offer our ethnically diverse student population the opportunity to use their artistic talent, body and mind as an instrument of communication to express the joy that the arts bring to life.

## What?

The Conservatory of Fine

a Saturday morning program sponsored by the Gifted/Talented Programs Office of the Los Angeles Unified School District since 1981. The Performing Arts Division offers instruction to students who have talent in drama, dance, and/or voice. The Visual Arts Division serves students talented in drawing and painting. The Conservatory is a 24-week program providing differentiated instruction with a broad and varied curriculum to motivated and talented students. Instruction is provided by District personnel as well as selected resource professionals. The Conservatory is not intended as a replacement for local school arts programs, but as a supplement to them.

## Who?

The program is open to third

through twelfth grade students attending LAUSD who reside within LAUSD boundaries and who have been recommended by their regular schools or have been identified as talented in the areas of dance, drama, voice, or visual arts.

**LOS ANGELES UNIFIED SCHOOL DISTRICT  
CONSERVATORY OF FINE ARTS**

Office of Curriculum, Instruction and School Support

Judy Elliott, Ph.D., Chief Academic Officer

### Gifted/Talented Programs

LaRoyce Bell, District Coordinator

Dr. Lucy Hunt, District Specialist

Jennifer Slabbinck, District Specialist

Erin Yoshida-Ehrmann, District Specialist

Wynne Wong-Cheng, Specialist, Psychological Services

Yolanda Muñoz, Secretary

### Administrative Offices

333 S. Beaudry Avenue, 25th Floor

Los Angeles, CA 90017

(213) 241-6500

<http://www.lausd.net/GATE>

## When?

Instruction for the 2010-2011

academic year will begin October 9, 2010 and conclude on May 7, 2011. The Performing Arts Division meets from 9:00 a.m. to 1:00 p.m.; the Visual Arts Division meets from 10:00 a.m. to 1:00 p.m. Good conduct and attendance is mandatory. Students with three absences will be dropped from the program (three tardies constitute one absence). *Eligible students will be invited by letter which must be presented to register.* The Conservatory will be held on the following dates:

Fall Semester—Oct. 9, 2010 to Jan. 29, 2011

Nov. 20 off for Veteran's Day Nov. 27 off for Thanksgiving

Winter Break—Dec. 20, 2010 to Jan. 1, 2011

Jan. 15 off for Martin L. King's Birthday

Spring Semester—Feb. 5 to May 7, 2011

Feb. 19 off for President's Day

Spring Break—Apr. 18 to Apr. 23, 2011

Student Registration:  
Visual and Performing Arts  
Returning students' 1st  
day is Saturday, Oct. 9th;  
New students' 1st day is  
Saturday, Oct. 16th.

## Where?

The Conservatory of Fine Arts

is housed on the campus of California State University, Los Angeles, at the eastern limit of the City of Los Angeles. Parents of participants must furnish transportation to classes, as no district transportation is provided.



Five miles east of downtown L.A. near the Interchange of the 10 and the 710 Fwys. Exit on Eastern Ave. off the 10. North to Paseo Rancho Castilla to Parking Lot 5, near Parking Structure C. (Cal State does not provide free parking.)

California State University, Los Angeles  
5151 State University Dr.  
Los Angeles, CA 90032

Due to State restrictions, participants must be enrolled in LAUSD schools and live within LAUSD boundaries. The administrator of charter schools within LAUSD boundaries must contact the Charter School's office to start the fee-for-service process in order for students to participate. The application and an Emergency Card must be obtained from the school of attendance, completed, signed and submitted by the September 24, 2010 deadline to the Gifted/Talented Programs office.

# How?

## 1. Applications

Third through twelfth grade students who attend an LAUSD schools and live within LAUSD boundaries, meet the criteria on the reverse side of the application, and are interested in being recommended for participation in the Conservatory should contact their local school coordinator, gifted/talented programs, at the end of August for applications and information. Identified as talented and qualifying returning Conservatory students will have priority. **Acceptance of recommended students will depend on the availability of space. Students will be invited by letter.**

# How?

## 2. Identification

Students attending LAUSD schools who reside within LAUSD boundaries and who have been recommended to the Conservatory may be eligible to be identified as talented by the District. Documentation should be requested from the local school of attendance and should be submitted to the Gifted/Talented Programs office three weeks before the date of the audition or demonstration. Students must select **one** category at a time. **Students will be invited by letter.** (Students will not be seen if their names do not appear on the roster.)

Auditions for performing arts identification and demonstrations for visual arts identification will be held from 9:00 a.m. to 1:00 p.m. as listed below:

| Assessment Date | Deadline Date | Location |
|-----------------|---------------|----------|
| 11-20-2010      | 10-27-2010    | CSULA    |
| 05-21-2011      | 04-27-2011    | CSULA    |



The administrator of charter schools, independent or affiliated, within LAUSD boundaries must contact the Charter School's office to start the fee-for-service process for students to be assessed at an audition or a demonstration.

Talent assessment in the Performing Arts and Visual Arts is conducted twice a year the third Saturday in November and the Third Saturday in May, unless otherwise notified. Schools with student referrals must submit student data three weeks prior to the event. Participants will be invited by letter by the Gifted/Talented Programs.

### LOS ANGELES UNIFIED SCHOOL DISTRICT CONSERVATORY OF FINE ARTS



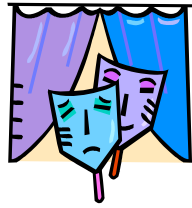
#### Performing Arts Division:

Karen McDonald, Director  
Nina Flagg, Co-Director



#### Visual Arts Division:

Carlos Vargas, Director  
Catalina Olvera, Co-Director



# Performing Arts

The Performing Arts Division of the Conservatory of Fine Arts offers singers, dancers, and actors a chance to expand and refine their talents. The program presents the skills that a performer needs, and gives students an opportunity to learn expression, interpretation, and movement. Performance Lab sessions are scheduled on designated Saturdays to enrich the program through a series of lecture/demonstration sessions.

Students learn about the dynamics of the performer-audience relationship during works-in-progress-sessions, when various classes share their work with the rest of the Division. During the fall and spring semesters there will be an open house for parents, and the year culminates in a Showcase Performance.



**Dance:** Jazz I and II, Modern Dance, Folklorico, and Creative Movement.

**Music:** Vocal Ensemble (Beginning, Intermediate, Intermediate/Advanced, and Advanced.)



#### Theater Arts:

- Beginning—Introduction to Acting;
- Intermediate—Elements of Acting;
- Intermediate/Advanced—Elements of Theatre/Character Analysis; Advanced—Character Building & Improvisation/Scene Study and Character Building.



# Visual Arts

This program exposes students to a wide variety of media. Students have the opportunity to concentrate on projects of personal interest and to learn from a variety of instructors. Students in their second year of participation may be referred for identification as talented within the Conservatory class schedule. Museum trips complement the classroom instruction. There is an open house the first semester, and an Art Show at the end of the school year.

**Beginning:** Introduction to various media and techniques; Art history related to student's own cultural heritage; Line, contour, shading, one-point perspective, still lifes, and landscapes.



**Intermediate:** Refinement of first year techniques; Traditional art history; At least one independent project; Multipoint perspective, beginning figure drawing, portraits, development of a personal style.



**Advanced:** Figure drawing, air brush, color theory, composition; More advanced art techniques; Extended independent projects.